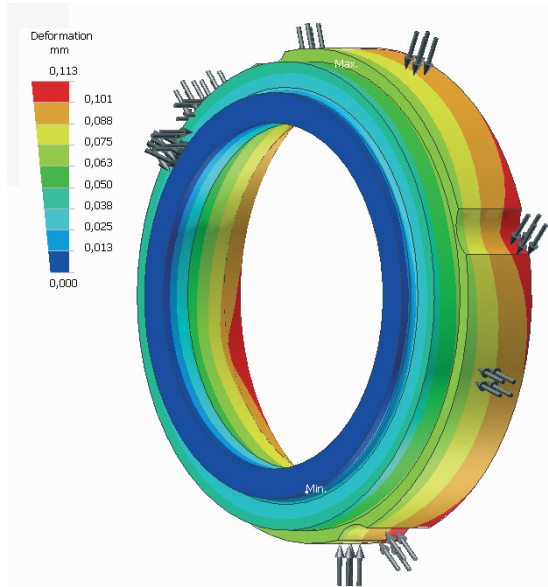


Compact seal suitable for Sundyne Pumps



Deformation analysis of the stationary carbon ring at ΔP 20bar



The medium lubricated mechanical seal type KPS is specially designed for the application in Sundyne high speed centrifugal pumps. Identical main dimensions with the original seals allow easy installation and interchangeability*. By applying the latest FE calculation methods the stationary carbon face is designed to provide superior sealing performance combined with high operating safety.

Design features

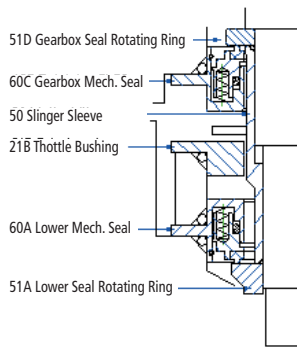
- Multi springs
- Bi-directional
- Secondary seal: PTFE U-cup or Elastomer

Two seal sizes are available:

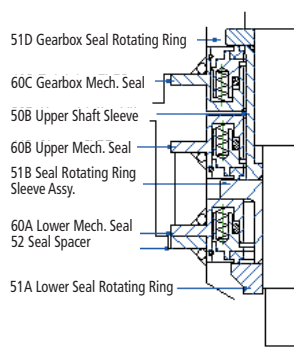
Type KPS-317: Lower seal (Pos. 60A)

Type KPS-381: Upper seal (Pos. 60B)

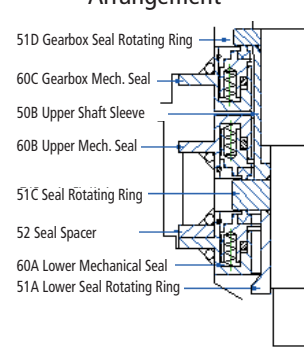
Single Seal Arrangement



Tandem Seal Arrangement



Double Seal (Face to Face) Arrangement



Operation limits

Temperature:	-50°C to +220°C
Pressure:	max. 45barg
Speed:	max. 22.000 rpm

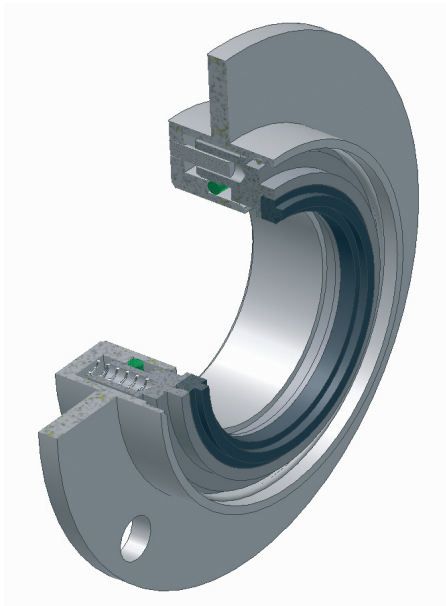
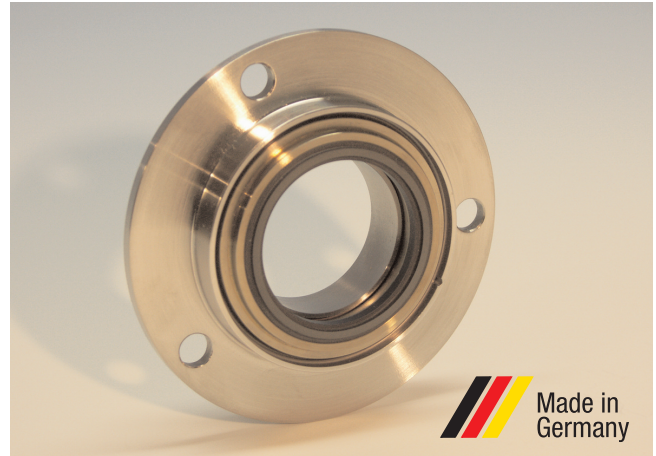
Standard materials

Seal face:	carbon resin impr.
Springs:	stainless steel
Seal retainer:	stainless steel
Secondary seal:	PTFE U-cup, Viton, EP-rubber etc.

further materials on request

* Due to its design **sammler cs** seal repair kits consisting of the stationary seal ring, the springs, the back up ring and the secondary seal fit in the original Sundyne mechanical seal retainer

Gearbox compact seal suitable for Sundyne Pumps



The medium lubricated gearbox mechanical seal **type KPX** is specially designed for the application in Sundyne high speed centrifugal pumps.

Identical dimensions with the original seals allow easy installation and interchangeability*.

Due to special design features the **KPX** seal can operate under reverse pressure thus providing maximum operating safety. Contamination and subsequent gearbox failure following a product entry due to a pump side mechanical seal collapse is excluded.

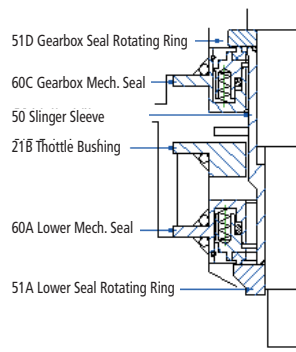
Design features

- Multi springs
- Bi-directional
- Reverse pressure capable

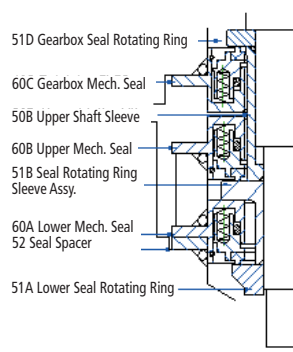
Seal designation:

KPX-381, gearbox compact seal (Pos. 60C)

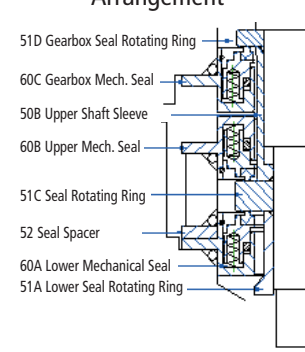
Single Seal Arrangement



Tandem Seal Arrangement



Double Seal (Face to Face) Arrangement



Operation limits

Pressure:	max. 20barg
Temperature:	-50°C to + 180°C
Speed:	max. 22.000 rpm

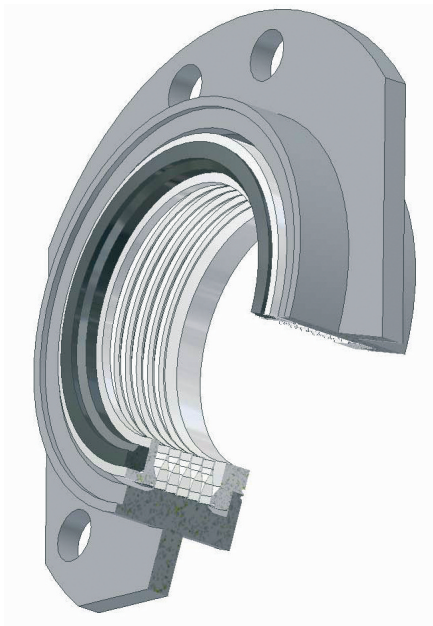
Standard materials

Seal face:	carbon antimony impr. in stainless steel body
Secondary seal:	Viton
Springs:	stainless steel
Seal retainer:	stainless steel

further materials on request

* Due to its design **sammler cs** seal repair kits consisting of the stationary seal ring, the springs, the back up ring and the secondary seal fit in the original Sundyne mechanical seal retainer

Metal bellows compact seal suitable for Sundyne Pumps

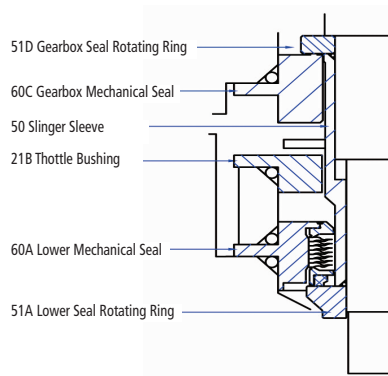


The medium lubricated metal bellows compact seal **type KPB** is specially designed for the application in Sundyne high speed centrifugal pumps. Identical dimensions with the original seals allow easy installation and interchangeability. By using a welded flexible metal bellows a secondary seal (e.g. dynamic o-ring etc.) and the seal springs are no longer necessary thus avoiding any possible fretting damage or seal hang up. The metal bellows compact seal **type KPB** makes a considerably contribution towards reducing down time and maintenance cost.

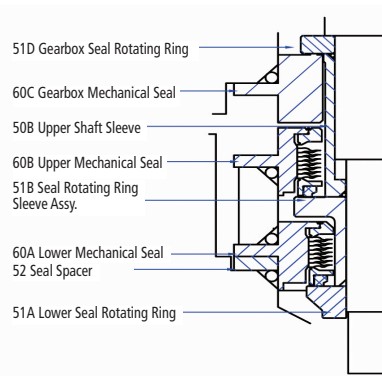
Two seal sizes are available:

KPB-317 - lower mechanical seal, Pos. 60A
KPB-381 - upper mechanical seal, Pos. 60B

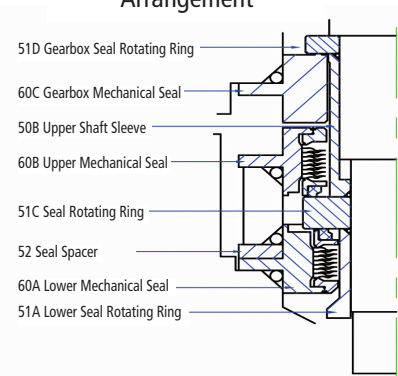
Single Seal Arrangement



Tandem Seal Arrangement



Double Seal (Face to Face) Arrangement



Operation limits

Pressure:	max. 20barg
Temperature:	-50°C to + 300°C
Speed:	max. 22.000 rpm
Specific weight:	≥ 0,65 kg/dm ³

Standard materials

Seal face:	carbon resin impr.
Metal bellows:	AM 350
Other components:	stainless steel

further materials on request